

1/16 LINE

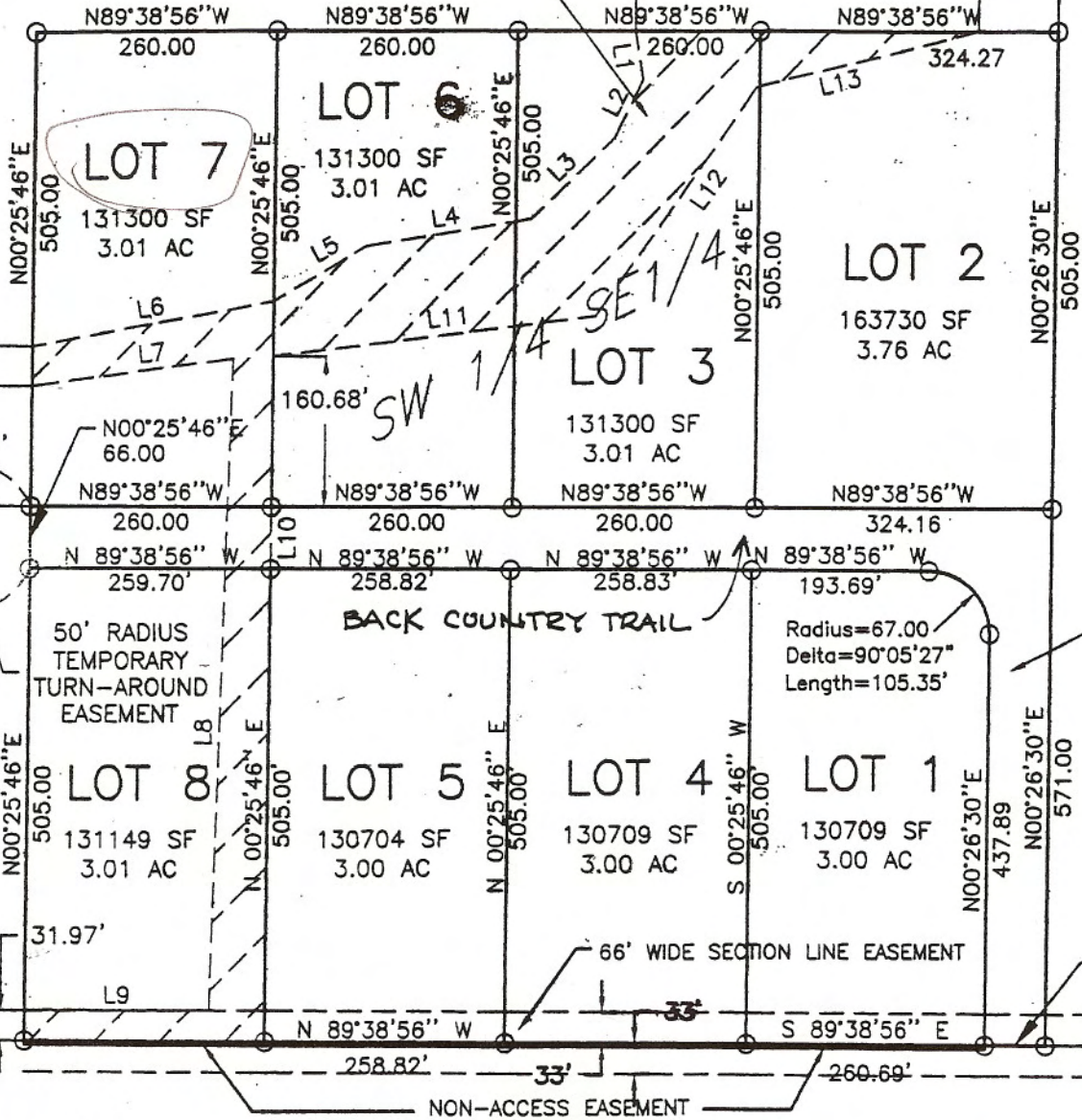
NW 1/4

1/16 L

NE 1/4

FEMA FLOODPLAIN AND MAJOR DRAINAGE EASEMENT SEE EASEMENT BEARING TABLE

85.65'



AREA TO BE C TO PUBLIC RIGHT 107171 2.46 A

SE

MAJOR DRAINAGE EASEMENT BEARING TABLE

| NUMBER | DIRECTION | DISTANCE |
|--------|-------------|----------|
| L1 | N09°28'12"W | 51.38 |
| L2 | N25°41'42"E | 67.95 |
| L3 | N45°47'51"E | 123.28 |
| L4 | N80°58'34"E | 180.17 |
| L5 | N59°43'42"E | 114.97 |
| L6 | N79°59'11"E | 264.38 |
| L7 | N82°22'22"E | 218.63 |
| L8 | N01°50'33"E | 696.51 |
| L9 | EAST | 199.30 |
| L10 | N00°25'46"E | 66.00 |

FLOODPLAIN NOTES:

FEMA FLOODPLAIN DETERMINED USING FEMA FIRM MAP PANEL 793 OF 2025 USING ELEVATION 3172.00 AS THE FLOOD ELEVATION LINE. BENCHMARK USED WAS FEMA RM9 WITH AN ELEVATION OF 2983.74 AS SHOWN ON FEMA FLOODWAY MAP PANEL 789 OF 2025.

OUND BRASS CAP

N89d38'56"W 2893.00

Radius=67.00
Delta=90°05'27"
Length=105.35'

N89°38'56"W 66.00

BROMEGRASS RC

NON-ACCESS EASEMENT

66' WIDE SECTION LINE EASEMENT

50' RADIUS TEMPORARY TURN-AROUND EASEMENT

BACK COUNTRY TRAIL

SW 1/4

SE 1/4